



NUTRILAND (EA) LTD



COMPANY PROFILE

About US

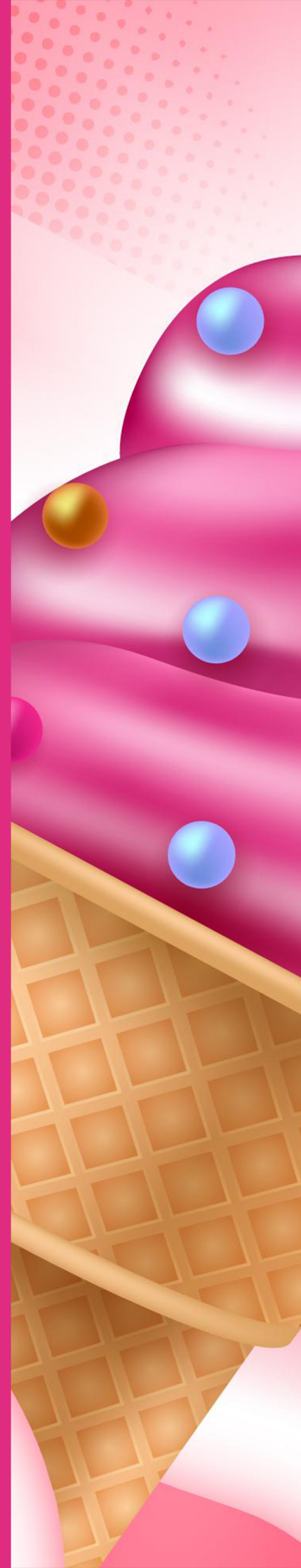
Nutriland (EA) Ltd is a fast-growing food manufacturing company specializing in the production of high-quality ice cream and frozen dessert products. We are committed to delivering rich taste, consistent quality, and innovative flavors that delight consumers across East Africa.

Our products are crafted using carefully selected ingredients, modern production processes, and strict quality control standards to ensure every scoop meets our promise of excellence.

Nutriland serves households, retailers, institutions, and the hospitality industry, offering products tailored for both everyday enjoyment and commercial use.

OUR Team

Our team is made up of experienced and passionate professionals who are dedicated to quality, innovation, and customer satisfaction. Working together across production, quality control, and distribution, we ensure Nutriland products consistently meet our brand promise.





Our Vision

To become a leading and trusted ice cream brand in East Africa, known for superior quality, great taste, and continuous innovation.

Our Mission

To produce affordable, high-quality ice cream products that bring joy to consumers while maintaining the highest standards of food safety, consistency, and customer satisfaction.

Core Values

- **Quality First:** We never compromise on taste or standards
- **Innovation:** Continuously developing exciting flavors and formats.
- **Customer Focus:** Building long-term partnerships with our clients
- **Integrity:** Honest, transparent, and ethical business practices

Our Products



1.

Premium Ice Cream Containers (4000ml)

Our Regular Range is designed for affordability and value without compromising on taste, making it ideal for households, institutions, and bulk buyers.

Available Flavors:

1. **Vanilla Regular** - Light, smooth, and versatile
2. **Strawberry Regular** - Refreshing with a balanced fruity taste
3. **Blueberry Regular** - Sweet and mildly tangy berry flavor
4. **Mango Regular** - Bright tropical mango goodness
5. **Pistachio Regular** - Mild nutty flavor with a creamy base
6. **Chocolate Regular** - Classic chocolate taste loved by all ages

2.

Soft Serve Ice Cream Range

Our Soft Serve Ice Cream is specially formulated for smooth dispensing and consistent texture, perfect for ice cream machines, cafés, events, and commercial outlets.

Available Variants:

1. **Soft Serve Vanilla (5000ml)** - Smooth, creamy vanilla ideal for cones and desserts
2. **Soft Serve Chocolate (500ml)** - Rich chocolate flavor with a silky finish
3. **Soft Serve Strawberry (500ml)** - Sweet and refreshing strawberry soft serve

3.

Regular Ice Cream Family Packs (4500ml)

Our Regular Range is designed for affordability and value without compromising on taste, making it ideal for households, institutions, and bulk buyers.

Available Flavors:

1. **Vanilla Regular** - Light, smooth, and versatile
2. **Strawberry Regular** - Refreshing with a balanced fruity taste
3. **Blueberry Regular** - Sweet and mildly tangy berry flavor
4. **Mango Regular** - Bright tropical mango goodness
5. **Pistachio Regular** - Mild nutty flavor with a creamy base
6. **Chocolate Regular** - Classic chocolate taste loved by all ages

Why Choose Us?

- Wide variety of popular and premium flavors
- Competitive pricing and flexible packaging sizes
- Consistent quality and reliable supply
- Products suited for both retail and commercial use
- Strong focus on customer satisfaction

OUR Clients

Nutriland (EA) Ltd serves a diverse and growing client base across the retail, hospitality, and institutional sectors. Our clients include wholesalers, distributors, supermarkets, hotels, restaurants, cafés, and event service providers.

We value long-term partnerships built on trust, consistent product quality, and reliable supply, and we work closely with our clients to meet their specific market and operational needs.



Let's Connect

0796 388 539



nutriland60@gmail.com



P.O.Box 225, Spine Road, Kayole,
Nairobi-Kenya



*Bringing joy, quality, and
great taste to every scoop.*